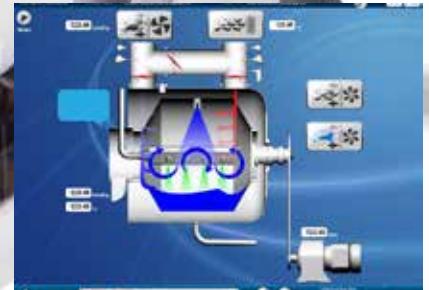
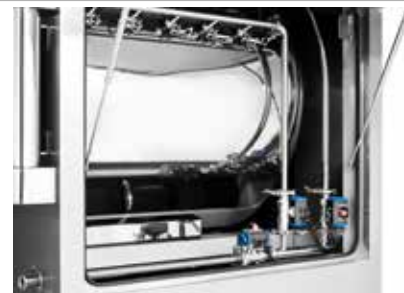
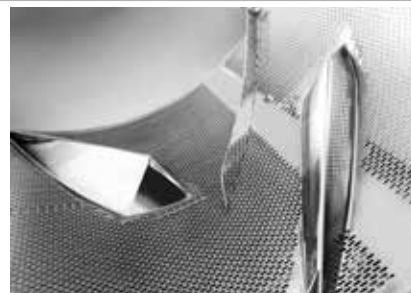


Auto
Coating
Series



Auto Coating Series



- Production capacity is based on the tablet porosity at 0.3 at density of 0.7 and the result may vary depending on tablet shape and pan speed.
- Coating volume is calculated based on the maximum production capacity. Use safety ratio for safe operation.
- Specifications and dimensions are subject to change without prior notice.



SFC-150D

- Production capacity is based on the tablet porosity at 0.3 at density of 0.7 and the result may vary depending on tablet shape and pan speed.
- Coating volume is calculated based on the maximum production capacity. Use safety ratio for safe operation.
- Specifications and dimensions are subject to change without prior notice.

SFC Series

Auto
Coating
Series

Description		Model									
		60	80	100	100D	130	130D	150	150D	170	170D
Coating pan Diameter (Ø mm)		650	950	1,050	1,000	1,300		1,500		1,700	
Coating Volume	(ℓ/batch)	27	78	117	140	207	320	360	570	585	945
	(kg/batch)	10~19	20~55	40~82	35~100	80~145	50~225	129~240	140~400	210~410	290~660
Coating Pan Speed (rpm)		1 ~ 16			1 ~ 14				1 ~ 12		1 ~ 10
Pan Drive Motor (kW)		1.5	2.2		3.7		5.5		7.5		11
Total Power Consumption (kW)		15	19		22.5		22.1	22.1	28.3		37.3
Compressed Air Consumption (ℓ/min)		450	600	200	800	600	1,000	800	1,200	1,000	1,400
Air Supply Heating Type		Steam									
Filter		Supply: Pre, Medium/ Exhaust : cartridge									
Spray Gun Model		Schlick Gun 930									
Spray Gun Quantity		1	2		3	2	4	3	6	4	7
Refining Temperature Sensor		Non-Contact type									
Exhaustair (Heat Exchanger) HEPA Filter (option)		●									
Exhaustair (Dust Collector) HEPA Filter (option)		●									
Air Supply	Air Volume (CMM)	30	35	40	45		50		65		80
	Wind Pressure (mmAq)	60	80				100				
Exhaust Air	Air Volume (CMM)	30	35	40	45		50		65		80
	Wind Pressure (mmAq)	350	400	400	450						
CIP system (option)	Standard	Horizontal WIP Pump									
	Automatic	CIP System [Vertical WIP Pump + Detergent+ Air purge + 3 water selection]									
Solution Pump	Film	Watson-Marlow 520 Series (Perstaltic)									
	Sugar	Graco Husky 716 Series(Diaphragm)									
Dimension (mm)	Width (W)	1,100	1,350	1,350	1,350	1,580	1,580	1,820	1,820	2,100	2,100
	Depth (D)	1,720	1,750	1,800	2,370	1,950	2,689	2,170	3,230	2,620	3,650
	Height (H)	1,500	1,770	1,770	1,770	1,890	1,890	2,050	2,050	2,120	2,120
Operating Type		HMI (21 CFR Part 11)									
Power Supply		200, 220, 380, 400, 415, 440, 480V, 50/60Hz, 3Ph									

- Production capacity is based on the tablet porosity at 0.3 at density of 0.7 and the result may vary depending on tablet shape and pan speed.
- Coating volume is calculated based on the maximum production capacity. Use safety ratio for safe operation.
- Specifications and dimensions are subject to change without prior notice.

C Series

Auto Coating Series



Description		Model										
		30				60			100			
Coating pan Diameter (Ø mm)		240	330	420	480	480	550	650	700	730	840	950
Coating Volume	(ℓ/batch)	1	2.5	5	9	9	16	28	30	40	70	115
	(kg/batch)	0.4~0.7	0.7~1.7	1.7~3.5	2~6.3	2~6.3	5~11	10~19	20	25	50	80
Coating Pan Speed (rpm)		3 ~ 50				1 ~ 25			1~20			
Pan Drive Motor (kW)		0.4				0.75			2.2			
Total Power Consumption (kW)		11.2				13.45			21			
Compressed Air Consumption (ℓ/min)		200				450			1,000			
Air Supply Heating Type		Electronic heater (8.4kW)				Steam						
Filter		Supply: Pre, Medium, HEPA Exhaust: Cartridge				Supply: Pre, Medium / Exhaust: Cartridge						
Spray Gun Model		Schlick Gun 970				Schlick Gun 930						
Spray Gun Quantity		1				1			4			
Refining Temperature Sensor		Non-Contact type										
Exhaustair (Heat Exchanger) HEPA Filter (option)		●				●			●			
Exhaustair (Dust Collector) HEPA Filter (option)		●				●			●			
Air Supply	Air Volume (CMM)	14.5				30			45			
	Wind Pressure (mmAq)	60				60			85			
Exhaust Air	Air Volume (CMM)	11				30			45			
	Wind Pressure (mmAq)	120				350			450			
CIP system (option)	Standard	Manual				Horizontal WIP Pump						
	Automatic	-				CIP System [Vertical WIP Pump + Detergent+ Air purge + 3 water selection]						
Solution Pump	Film	Watson-Marlow 323U Series				Watson-Marlow 520 Series (Perstaltic)						
	Sugar	Watson-Marlow 323U Series				Graco Husky 716 Series(Diaphragm)						
Dimension(mm)	Width (W)	630				1,150			1,500			
	Depth (D)	770				1,490			1,600			
	Height (H)	1,750				1,570			1,900			
Operating Type		HMI (21 CFR Part 11)										
Power Supply		200, 220, 380, 400, 415, 440, 480V, 50/60Hz, 3Ph										